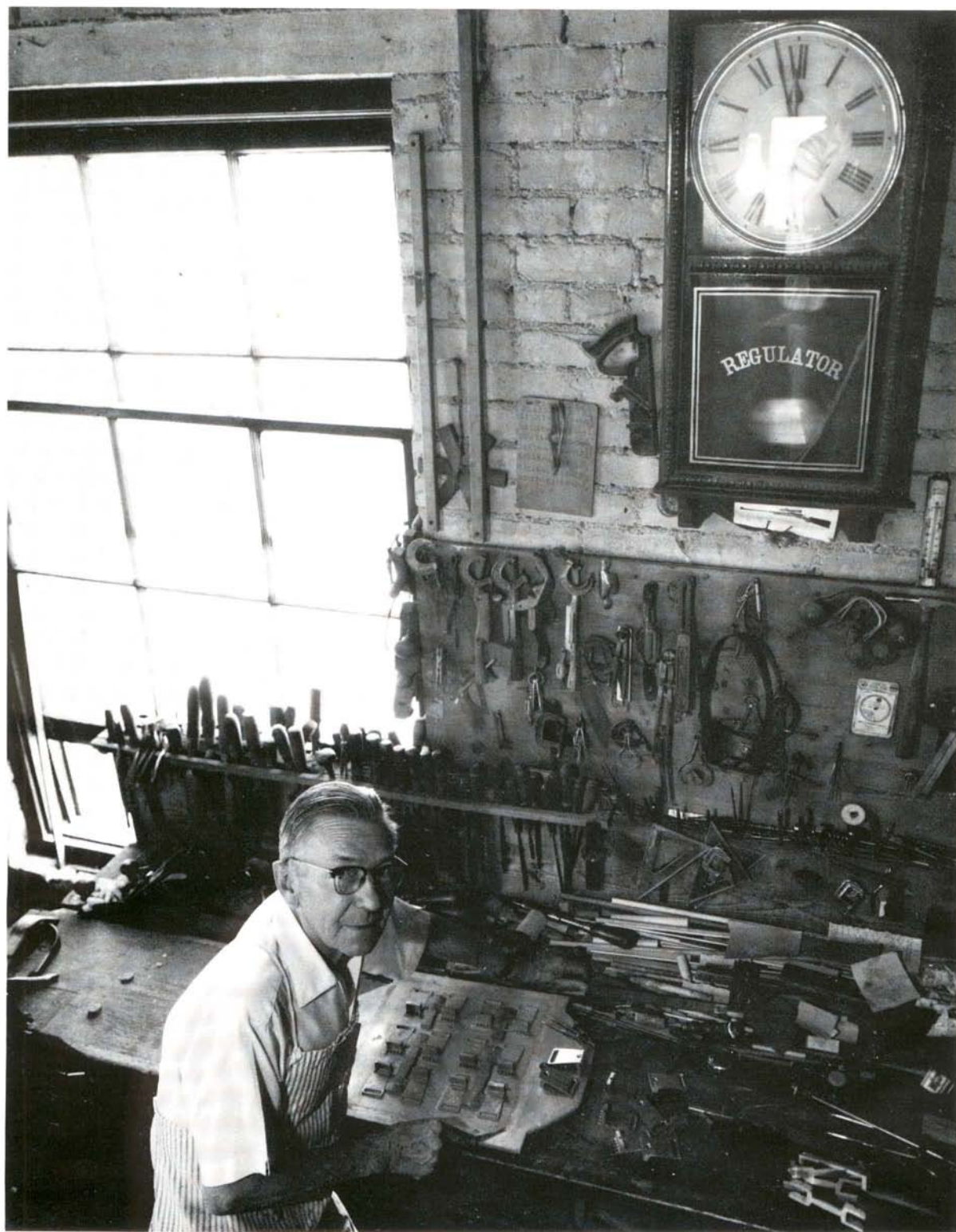




OME BANJOS





All Ome banjos feature a warranty to the original owner for defects in material or workmanship.

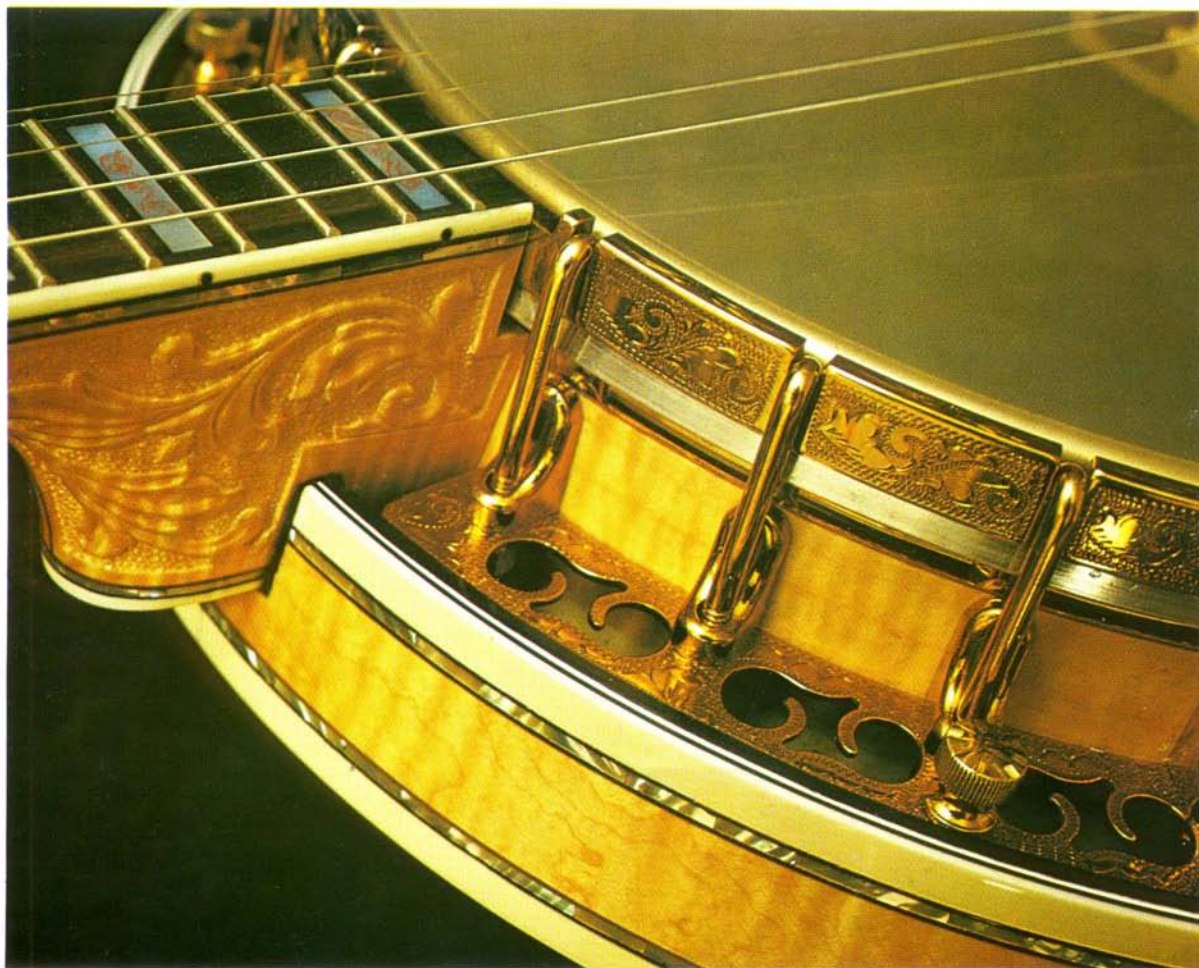
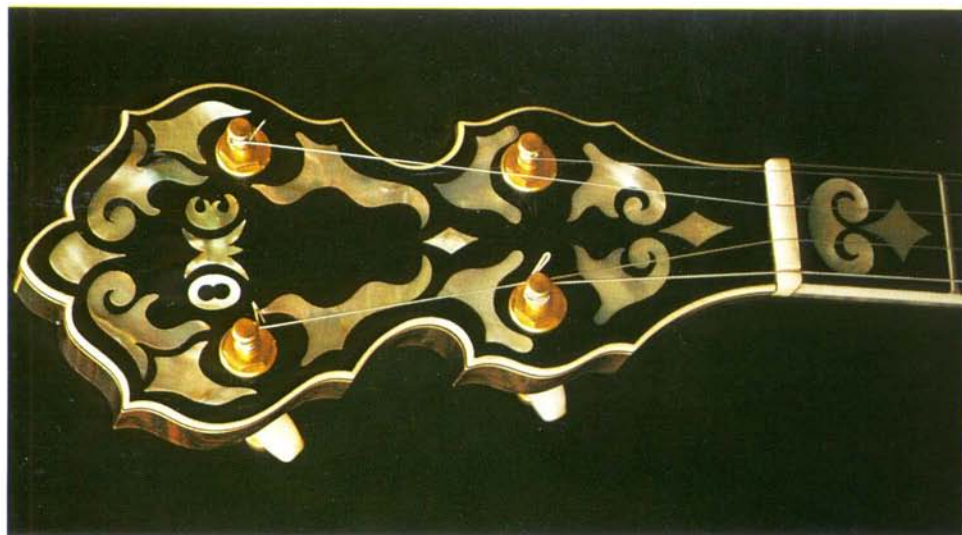
All Ome banjos have these outstanding features:

- A cast tone ring made of heavy, sand cast bell brass, precision machined and fitted to our laminated ten ply, $\frac{3}{4}$ inch hard maple rim. This ring gives a sharp full sound with rapid tone decay preferred by many banjo players.
- A flat top two piece spun brass and rolled steel tone ring that produces an exceptionally consistent tonal sound throughout the playing range. These rings offer some of the richest sounds heard today.
- Carefully selected and aged woods, graded according to model, are used throughout to give long lasting durability and natural beauty.
- All necks are hand-shaped and feature an adjustable truss rod. Only the highest quality mother-of-pearl inlays are used.
- All Ome banjos have a laminated hard maple rim.
- All models are finished in high quality lacquer, hand-sanded between coats, then hand-rubbed and polished to a brilliant sheen.
- Carefully polished metal parts are heavily plated with nickel, gold or black chrome for long lasting durability.
- All Ome banjos have 4:1 planetary gear pegs and a geared fifth peg.
- All banjos have two adjustable rim rods providing extra rigidity in the rim.

For ease of identification, all Moguls are four string banjos, all Juggernauts are five string banjos and the X models are available in both four and five string banjos.

Model	Neck Width at String Nut	Number of Frets	Scale
Tenor	1 $\frac{5}{32}$ "	19	22 $\frac{1}{8}$ "
5-String	1 $\frac{3}{16}$ "	22	26 $\frac{1}{4}$ "
Plectrum	1 $\frac{3}{16}$ "	22	26 $\frac{1}{4}$ "
Long Neck 5-String	1 $\frac{3}{16}$ "	25	32 $\frac{1}{4}$ "

LEFT HANDED 5-STRING BANJOS ARE AVAILABLE ON SPECIAL ORDER.

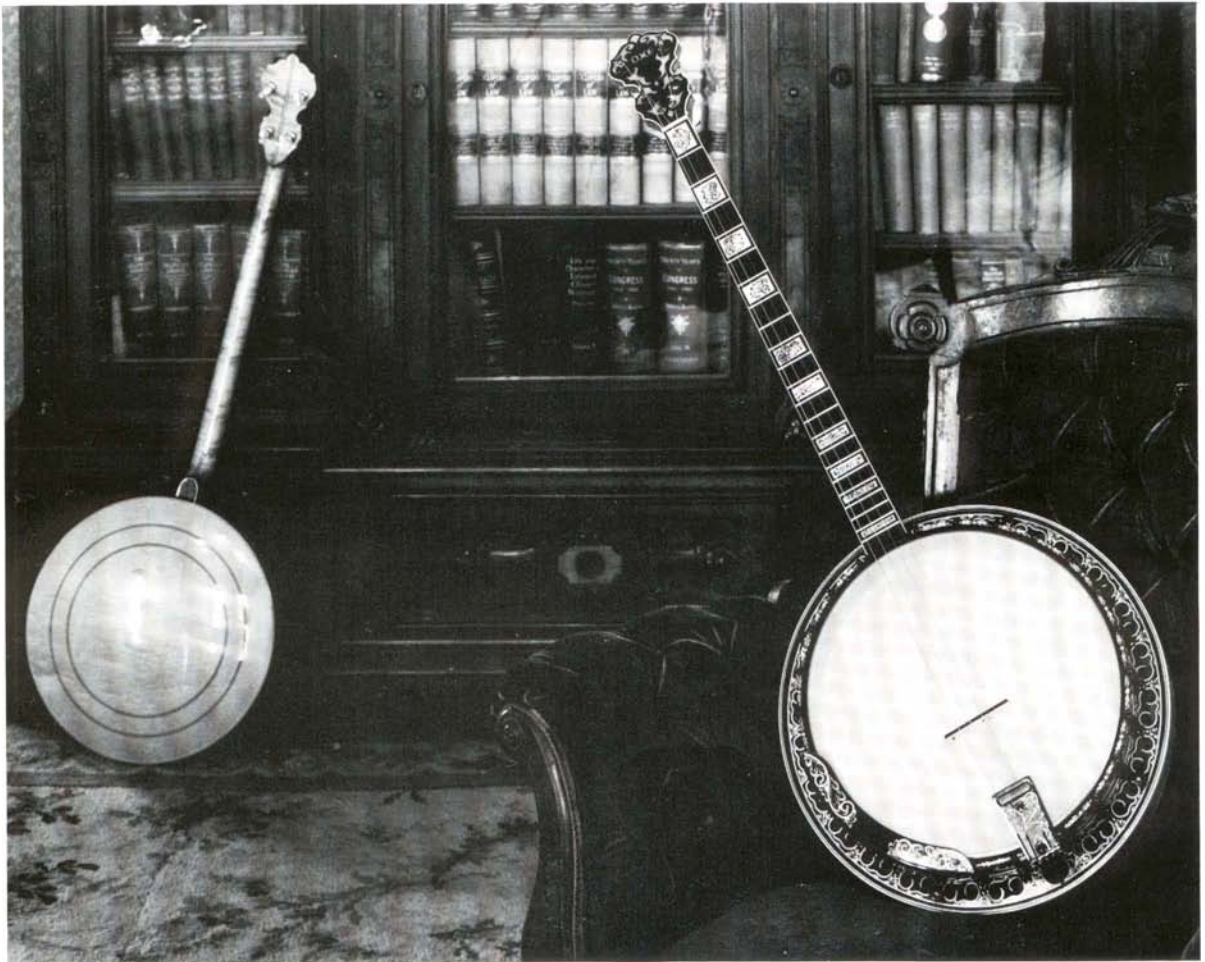


JUGGERNAUT III and BIG MOGUL

The 5-string Juggernaut III and 4-string Big Mogul banjo are our finest instruments. The gracefully sculptured neck has an elaborately hand-carved heel and peghead back. The solid wood resonator back, flat on the inside, which materially improves tone and volume is distinctively curved on the outside and hand-carved in high relief to match the neck. The gold plated planetary tuning pegs and kroll geared fifth peg have large mother-of-pearl knobs. The notched tension hoop, arm rest, tailpiece and resonator flange are

profusely hand-engraved and plated in 24 karat gold. The rosewood or curly maple veneered rim is bound in simulated grained ivory, and capped in black. Several hundred pieces of colorful abalone pearl are hand-cut and inlaid into the edges of the neck and resonator. The solid rosewood or curly maple resonator is bound with multiple ivory-black-ivory binding, while the ebony fingerboard and heel cap are bound with simulated grained ivory, and the peghead is bound in simulated ivory. A custom hard shell, plush lined case is included.





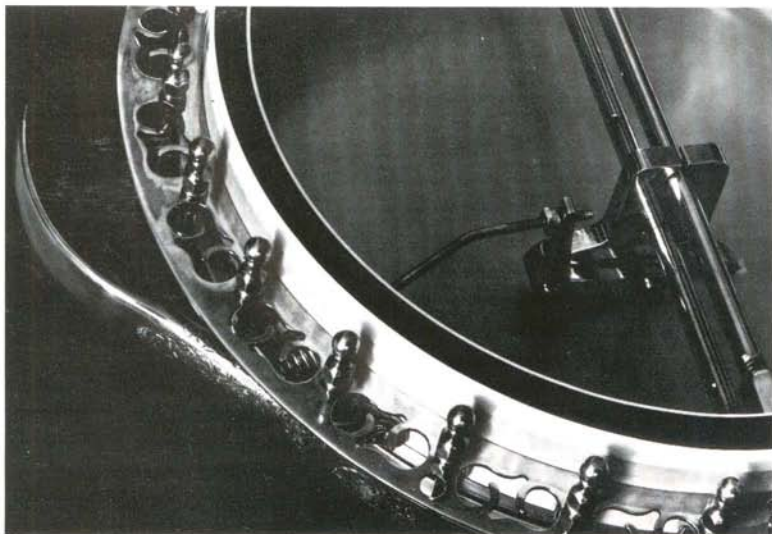
JUGGERNAUT II, GOLD MOGUL and BLACK MOGUL

The 5-string Juggernaut II and 4-stringed Gold Mogul and Black Mogul all feature a gracefully shaped, laminated rosewood neck with curly maple wood optional. The Black Mogul is available only in curly maple wood, as its metal parts are ornately engraved through a black chrome finish into the brass to create an unusually striking effect. The 5-string Juggernaut II and 4-string Gold Mogul both are heavily plated in 24 karat gold. All three banjos have a hand-engraved notched tension hoop, arm rest, tail piece and resonator flange. The ebony fingerboard, peghead overlay and heel cap are all bound in simulated ivory, and the rosewood or curly maple veneered rim is bound in simulated grained ivory and capped in black. The resonator has two concentric purfling rings inlaid in the back and is bound in multiple ivory-black-ivory binding. Custom hard shell case included. The 5-string Juggernaut is available in resonator model only and the 4-stringed Gold Mogul and Black Mogul are available in plectrum and tenor.









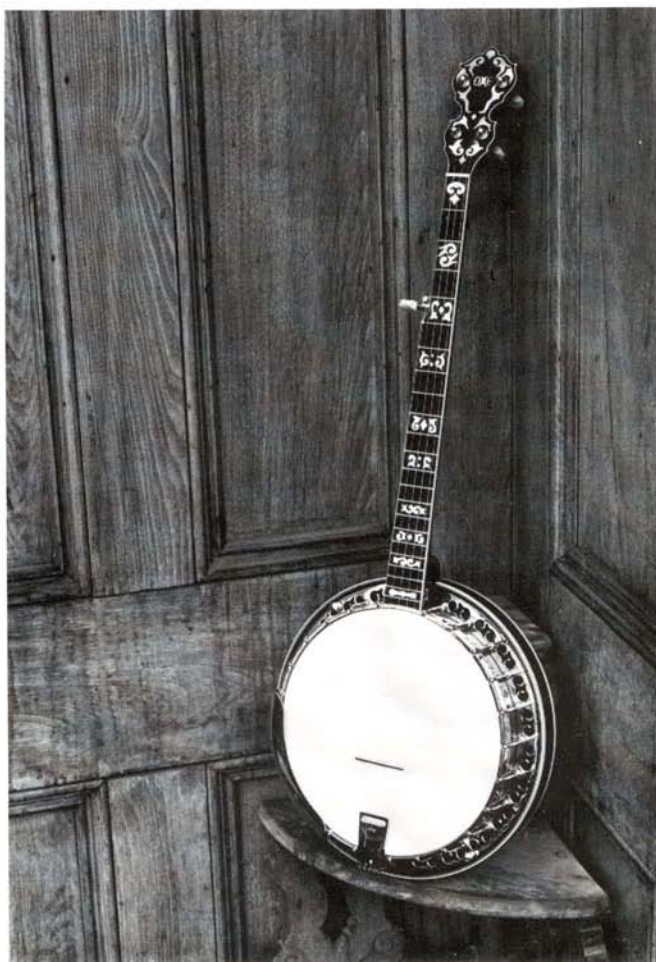
Ome knee mute is available on all 4-string banjos. Precision machined from brass, steel and aluminum, it is fitted to the instrument and is fully adjustable.





JUGGERNAUT I, SILVER MOGUL

Your choice of East Indian rosewood or curly maple is available for both the 4-string Silver Mogul and the 5-string Juggernaut I, with African ebony fingerboard, peghead overlay, and heel cap all bound in simulated ivory. The veneered rim is bound in simulated grained ivory and capped in black. The hand-shaped neck is laminated with one rosewood and two maple center stripes. Flat top spun brass tone ring, f-hole resonator flange, resonator with two inlaid purfling rings and bound with multiple ivory-black-ivory binding, and hand-rubbed lacquer finish are standard. Silver Mogul available in plectrum or tenor, and Juggernaut I available as 5-string resonator only.







JUGGERNAUT JR. and MOGUL JR.

The 4-string Mogul Jr. and 5-string Juggernaut Jr. have the same fine features. The veneered mahogany rim is bound in simulated grained ivory and capped in black. The notched tension hoop and all hardware are heavily nickel-plated, and the resonator and fingerboard are bound in simulated grained ivory. The resonator has two concentric purfling rings inlaid into it, and a custom hard shell case is also included. This banjo is available in plectrum, tenor and 5-string resonator models.

TRIPLE X

This instrument features a hand-shaped neck made of fine South American mahogany. The mother-of-pearl inlay work is offset by the African ebony fingerboard, peghead overlay and heel cap. All hardware on this instrument is heavily nickel-plated. The resonator has two concentric purfling rings inlaid into the back and the resonator and fingerboard are bound in simulated grained ivory. Available in 5-string resonator, plectrum and tenor.





DOUBLE X

The Double X banjo features a distinctive mother-of-pearl inlay pattern in a Brazilian rosewood fingerboard which is bound with simulated grained ivory. A notched tension hoop and round bracket hooks are used, and the neck is solid mahogany. The Open Back Model has the rim veneered inside and outside with mahogany, double bound with simulated grained ivory and capped in black. The Resonator Models are bound in ivory. Available in 5-string open back, 5-string resonator, plectrum and tenor.



SINGLE X

The Single X banjo features nickel plated hardware with a grooved tension hoop. The fingerboard, peghead overlay and heel cap are made of Brazilian rosewood. The neck is hand-carved from solid South American mahogany. The resonator is bound with simulated tortoise shell binding. The open back model has a strip of tortoise shell binding on the outside of the rim. Available in 5-string open back, 5-string resonator, 5-string open back long neck, plectrum and tenor.

Our special thanks to the Historical Society of Georgetown, Colorado for the use of the Hamill House for settings.

OME BANJOS

OME Company Inc.
4575 N. Broadway
Boulder, CO 80302
303-449-0041