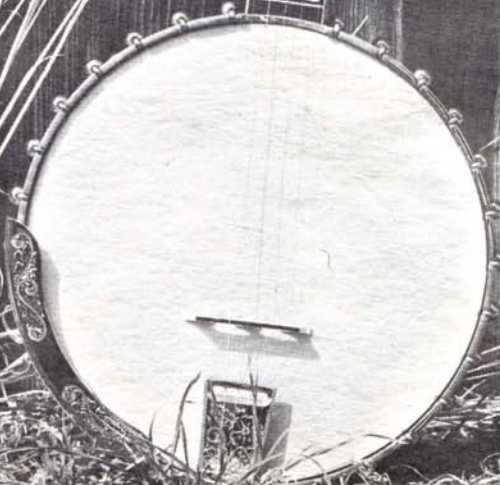


Muse

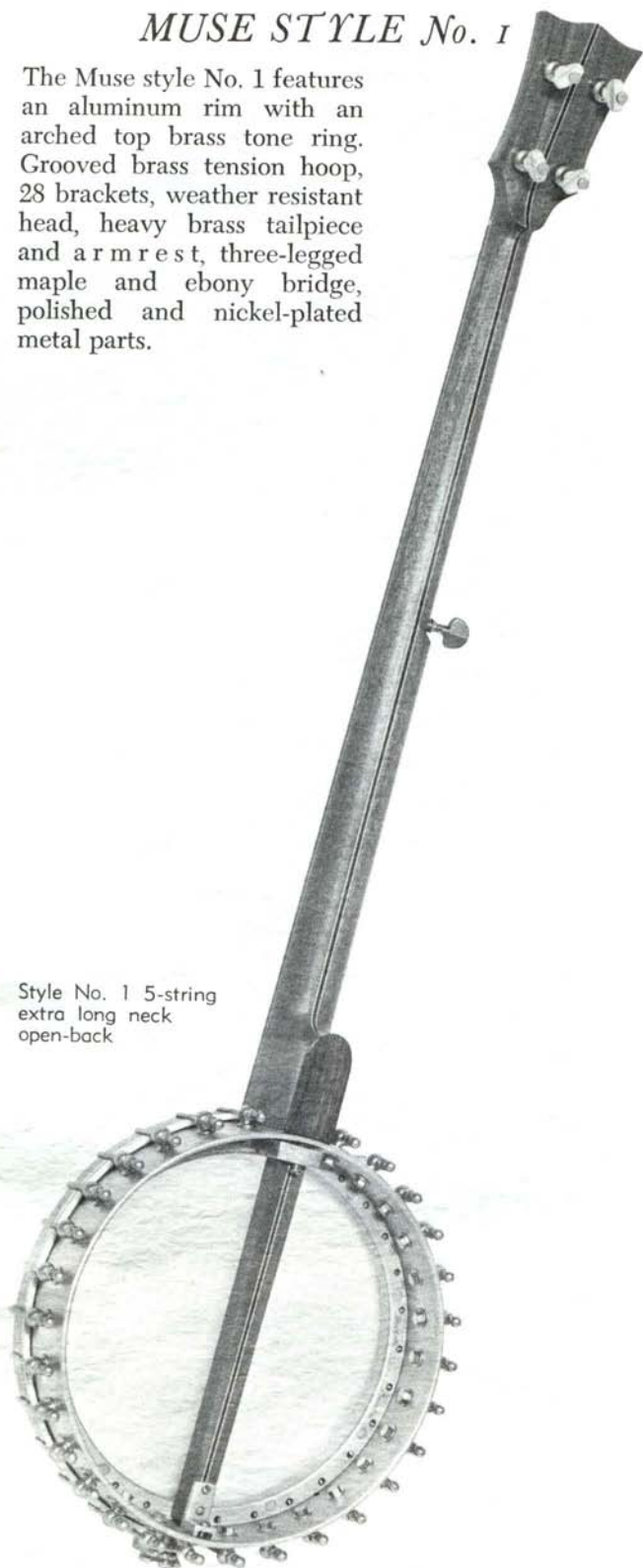
BANJOS



MUSE STYLE No. 1

The Muse style No. 1 features an aluminum rim with an arched top brass tone ring. Grooved brass tension hoop, 28 brackets, weather resistant head, heavy brass tailpiece and arm rest, three-legged maple and ebony bridge, polished and nickel-plated metal parts.

Style No. 1 5-string
extra long neck
open-back



MUSE STYLE No. 1

The hand shaped Peruvian mahogany neck is laminated with rosewood and maple centerstripes. Rosewood fingerboard, peghead overlay and heel cap. Mother-of-pearl position dots with corresponding side inlays, planetary gear pegs, square peghead, ivory string nut, rear adjustable tension rod, nickel-silver frets, natural finish.



MUSE STYLE No. 1

The style No. 1 resonator is laminated mahogany bound with ivoroid on the upper and lower edges. Natural finish. Nickel-plated, polished brass resonator flange.

Style No. 1 5-string
standard length neck
with resonator, D-
tuners* and 5th string
capo*
*Optional accessories



MUSE STYLE No. 1

Models

Style No. 1 banjos are available in the following models with or without resonators:

5-string, standard length neck, 22 frets, 27 $\frac{1}{8}$ " scale

5-string, extra long neck, 25 frets, 32 $\frac{1}{4}$ " scale

Plectrum, 22 frets, 27 $\frac{1}{8}$ " scale

Tenor, 19 frets, 22 $\frac{15}{16}$ " scale

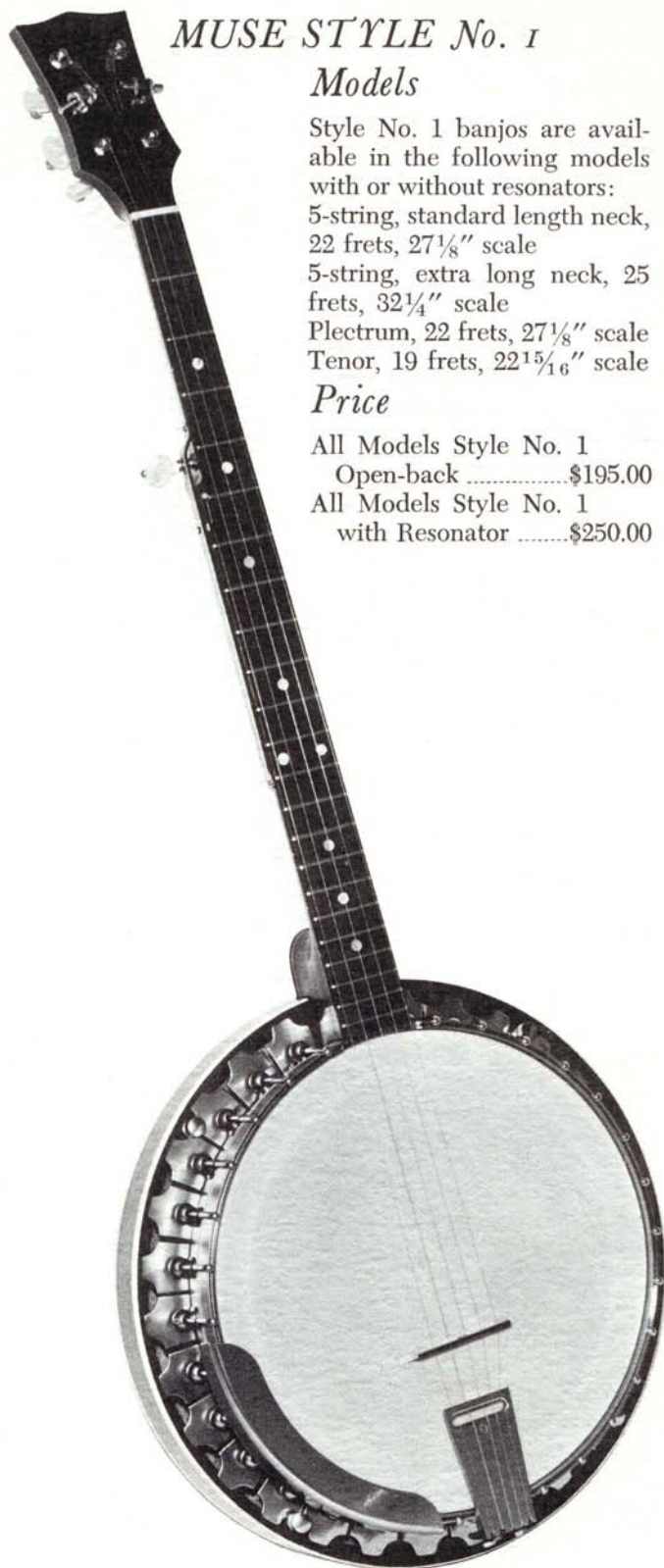
Price

All Models Style No. 1

Open-back\$195.00

All Models Style No. 1

with Resonator\$250.00



MUSE STYLE No. 5

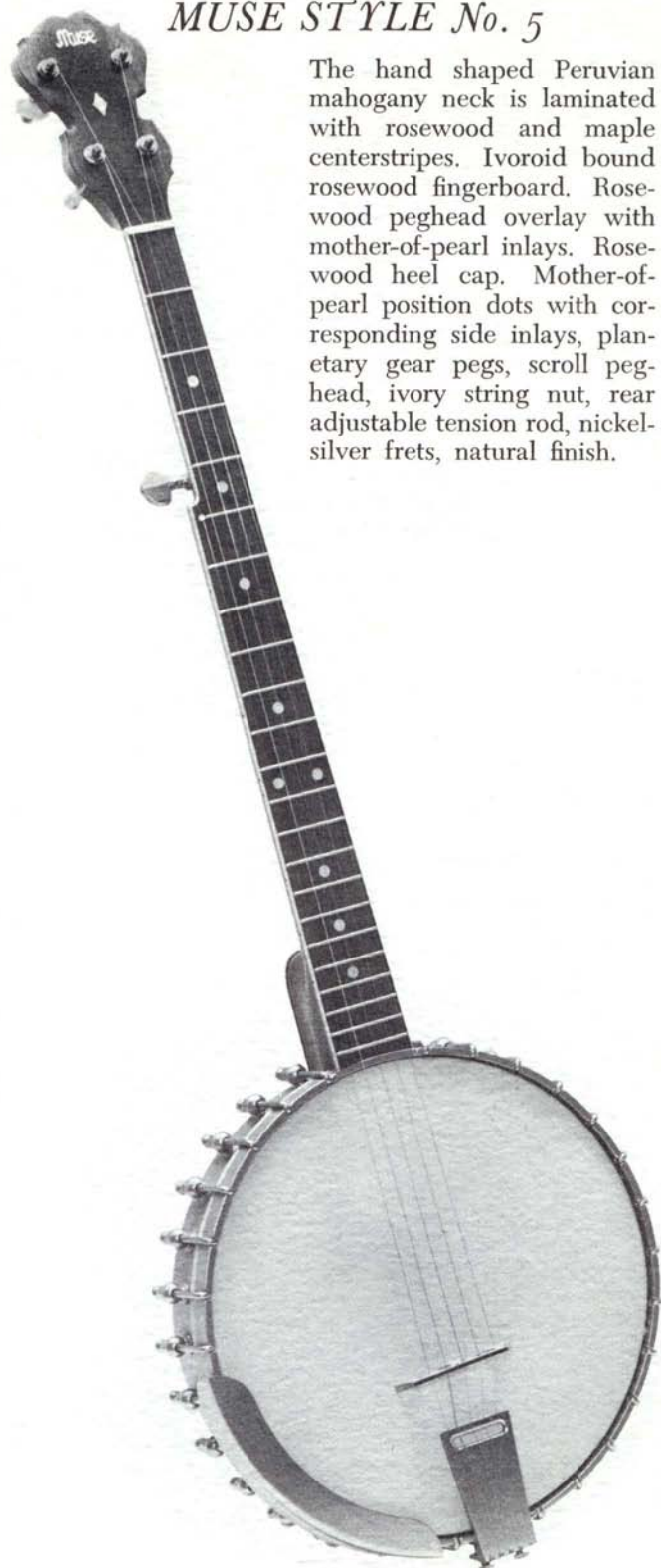
The No. 5 Muse features a seven-ply, 11" hard maple rim bound with ivoroid and finished to match the neck. Heavy cast brass flat top tone ring or hand wrought heavy brass arched top tone ring. Brass bracket band, notched brass tension hoop, 28 brackets, weather resistant head, brass tailpiece and armrest, three-legged maple and ebony bridge; polished and nickel-plated metal parts.

Style No. 5 5-string
standard length neck
open-back



MUSE STYLE No. 5

The hand shaped Peruvian mahogany neck is laminated with rosewood and maple centerstrips. Ivoroid bound rosewood fingerboard. Rosewood peghead overlay with mother-of-pearl inlays. Rosewood heel cap. Mother-of-pearl position dots with corresponding side inlays, planetary gear pegs, scroll peghead, ivory string nut, rear adjustable tension rod, nickel-silver frets, natural finish.



MUSE STYLE No. 5

The No. 5 resonator is laminated mahogany, bound with ivoroid on the upper and lower edges. Two concentric purfling rings are inlaid on the back. Natural finish. One piece cast brass resonator flange.

Style No. 5 5-string
standard length neck
with resonator, D-
tuners* and 5th string
capo*

*Optional accessories



MUSE STYLE No. 5

Models

Style No. 5 banjos are available in the following models with or without resonators:

5-string, standard length neck, 22 frets, $27\frac{1}{8}$ " scale

5-string, extra long neck, 25 frets, $32\frac{1}{4}$ " scale

Plectrum, 22 frets, $27\frac{1}{8}$ " scale

Tenor, 19 frets, $22\frac{15}{16}$ " scale

Price

All Models Style No. 5

Open-back\$295.00

All Models Style No. 5

with Resonator\$350.00



MUSE STYLE No. 9

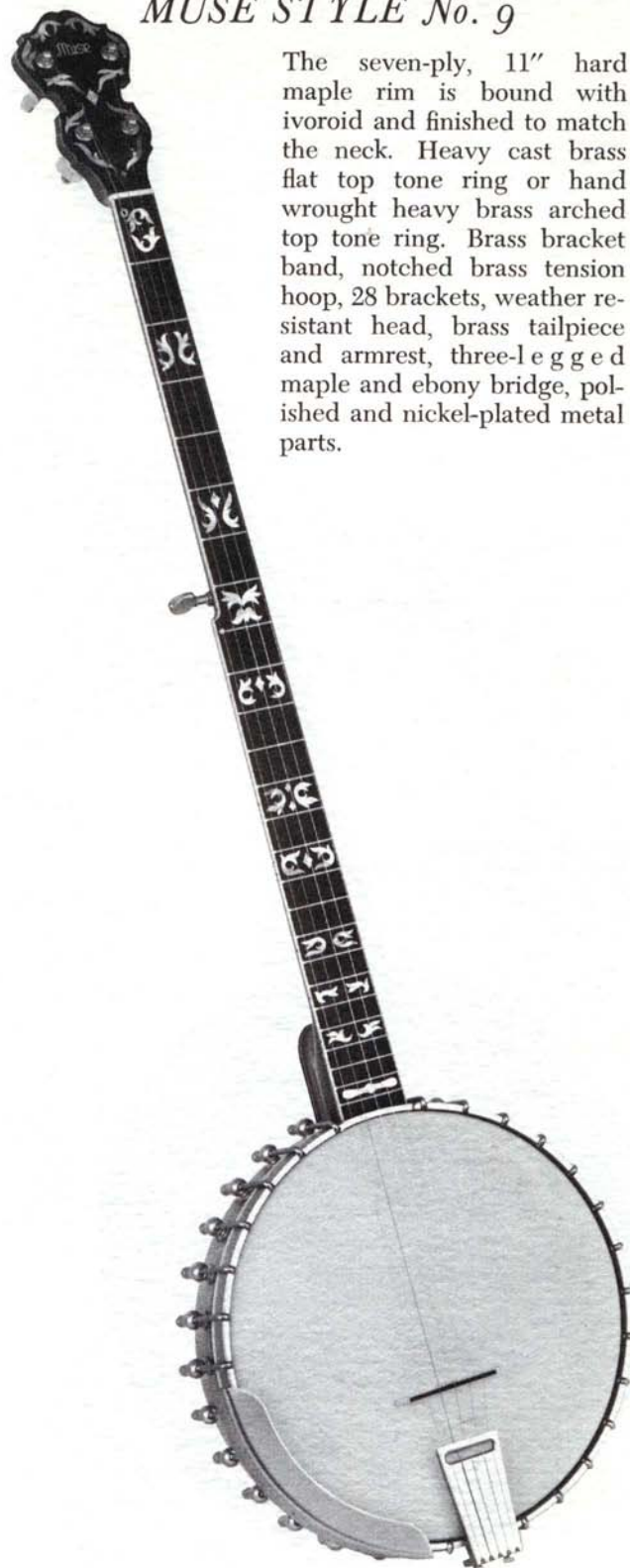
The Muse No. 9 features a hand shaped Brazilian rosewood neck laminated with rosewood and maple center stripes. Ivoroid bound ebony fingerboard. Ebony peghead overlay and heel cap. Leaf or scroll mother-of-pearl inlays. Planetary gear pegs, scroll peghead, ivory string nut, rear adjustable tension rod, nickel-silver frets, natural finish.

Style No. 9 5-string
extra long neck open
back, leaf inlays



MUSE STYLE No. 9

The seven-ply, 11" hard maple rim is bound with ivoroid and finished to match the neck. Heavy cast brass flat top tone ring or hand wrought heavy brass arched top tone ring. Brass bracket band, notched brass tension hoop, 28 brackets, weather resistant head, brass tailpiece and armrest, three-legged maple and ebony bridge, polished and nickel-plated metal parts.



MUSE STYLE No. 9

The No. 9 resonator is laminated rosewood bound with ivoroid on the upper and lower edges. Two concentric purfling rings are inlaid on the back. Natural finish. One piece cast brass resonator flange.



Style No. 9 Plectrum
with resonator, scroll
inlays

MUSE STYLE No. 9

Models

Style No. 9 banjos are available in the following models with or without resonators:

5-string, standard length neck, 22 frets, 27 $\frac{1}{8}$ " scale

5-string, extra long neck, 25 frets, 32 $\frac{1}{4}$ " scale

Plectrum, 22 frets, 27 $\frac{1}{8}$ " scale

Tenor, 19 frets, 22 $\frac{15}{16}$ " scale

Price

All Models Style No. 9

Open-back\$395.00

All Models Style No. 9

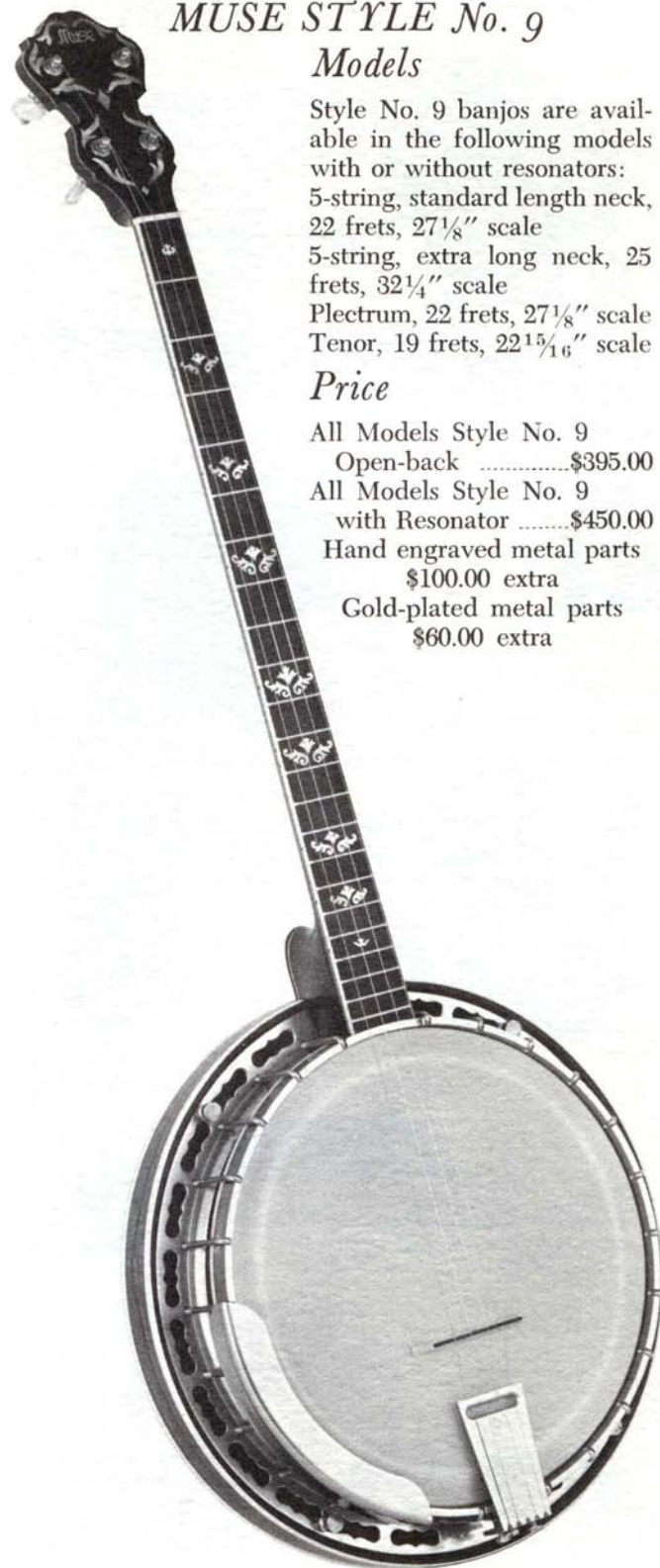
with Resonator\$450.00

Hand engraved metal parts

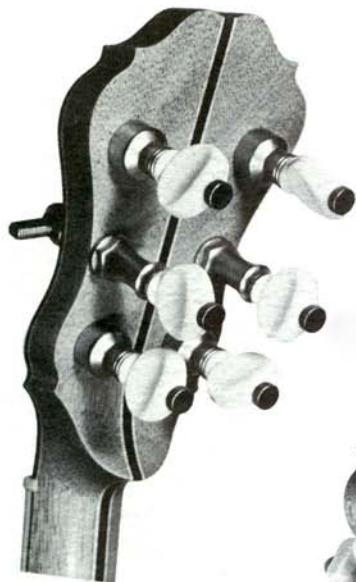
\$100.00 extra

Gold-plated metal parts

\$60.00 extra



PARTS & ACCESSORIES



- **Planetary gear pegs.** 4:1 ratio. Machined from brass. Steel gears. Spring tensioned. Thumb adjusting screw. Polished and nickel-plated.
-----\$24.00/set.
Gold plated.
-----\$30.00/set.



- **D-tuning pegs.** Fit all 5-string models. Quick, accurate adjustment. Machined from brass. Spring tensioned thumb adjusting screw. Brass string protectors. Polished and nickel-plated.
-----\$25.00/set.



- **Pressure tailpiece,** fully adjustable, and made of cast bronze. 4 or 5-string -----\$7.50



- **Three-legged maple bridge** with ebony top. 4 or 5-string. 1/2" or 5/8" high. \$1.00 ea.

PARTS & ACCESSORIES



- **Three-legged maple, ebony, and bone bridge.** 4 or 5-string. 1/2" or 5/8" high -----\$1.25 ea.



- **5th string capo.** Fits all 5-string models. Polished brass. Nickel-plated -----\$5.00

- **Strings**
5-string, light or heavy gauge -----\$1.00/set
Tenor banjo -----\$1.00/set

- **Plastic drum heads,** all sizes from 10" to 12 1/8" diameter \$7.00



- **Cases,** hard shell, plush lined, all sizes -----\$45.00/ea.

All instruments are warranted to the original owner against defective material or imperfect workmanship. Prices and specifications subject to change without notice.

Muse

BANJOS

Jamestown Star Route
Boulder, Colorado